

MUSEUM ROLE IN LEARNING INTRODUCTION TO WILDLIFE IN SURABAYA ZOO

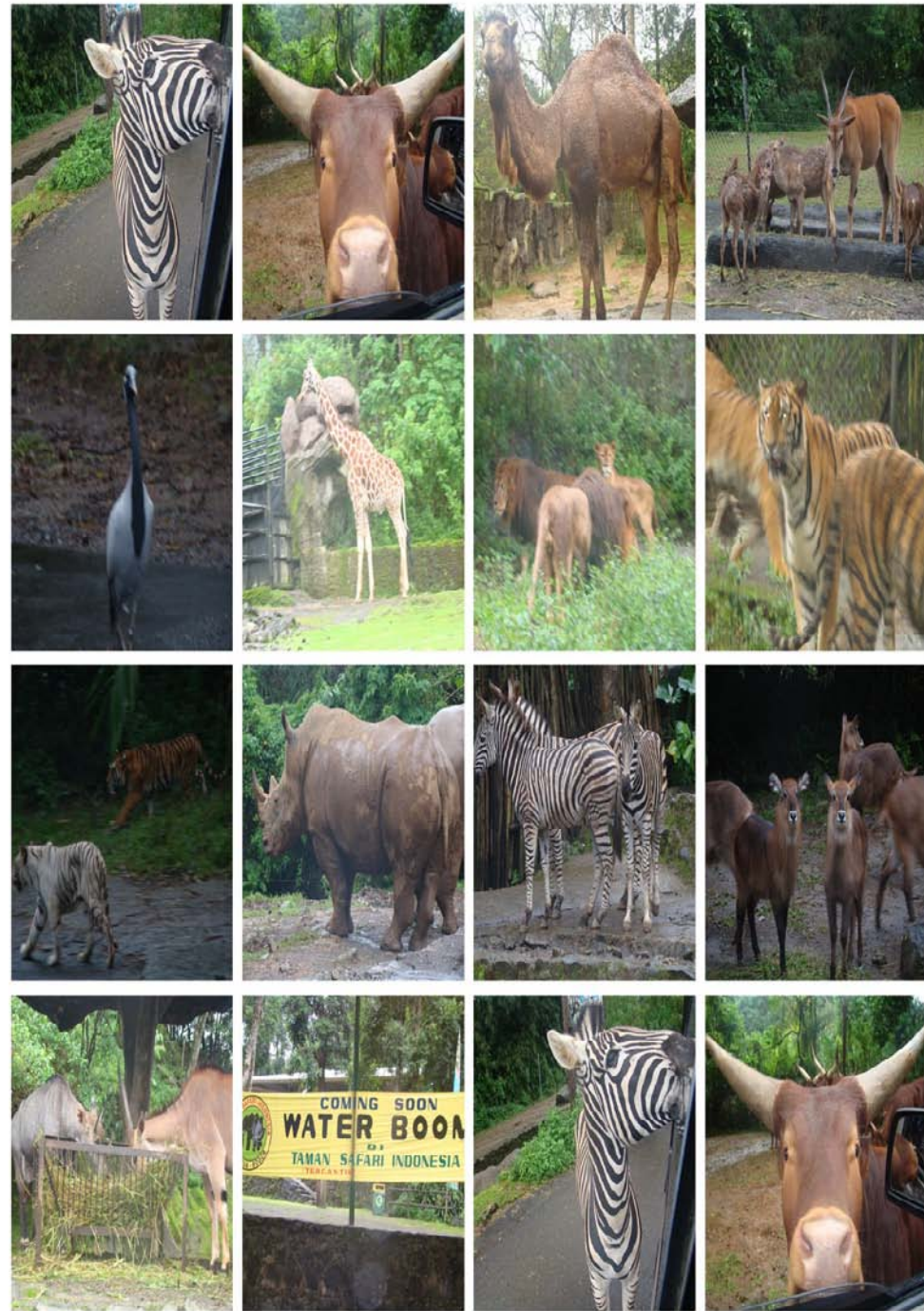
KEBUN BINATANG SURABAYA (ZOO)



- Wildlife park or zoo is a " living laboratory " and one of the potential for environmental education and the introduction of the flora and fauna for the general public .

- Surabaya Zoo plays an active role in helping educational institutions to utilize existing facilities to get to know and learn about the importance of nature conservation and the environment

to try the programs related to school curriculum such as package "Let's Study in the Zoo " which aims to help schools during a visit to Surabaya Zoo .



Surabaya Zoo is an exciting experience for the general public and school children as a zoology museum by presenting a practical educational tool for studying the diversity , behavior , ecosystems and fauna in the world to power in the form of preserved animals or replicas



the hope visitors will be able to rely more familiar with rich fauna in the world , and to raise awareness and love for the young generation will fauna and support for conservation efforts



**MUSEUM
TRADITIONAL**

museum area open because there are no buildings that remain we realized that if the museum is open will damage wildlife preserves displayed we open in the morning and afternoon we enter the back so the system disassembly.

new museum building that already exist in Surabaya zoo.



29/8/2011 14:40



29/8/2011 9:45



29/8/2011 14:40



**VISITORS A VERY
HIGH INTEREST**



**ALTHOUGH TRADITIONAL
MUSEUM**

1/9/2011 11:28

New museum building that already exist in Surabaya zoo.



Touch me - DO NOT BE AFRAID



Besides the zoo also provides education through a touch wildlife animals - wild animals are tame and domestic animals to be touched and held so that they could feel the skin , fur / hair of these animals so that they can lead to a sense of his love of animals , many are afraid to hold or touch for fear of being bitten , did not know it was lovethat was a motto .



CLASSROOM





W😊😊W
BATHING
ELEPHANT





STORY TELLING



Finally with educational functions performed by a zoo is expected to help provide information to better understand , know and understand about the wildlife and plants .

Greetings sustainable

“YOU MATTER - I SUSTAINABLE “

THANK YOU

